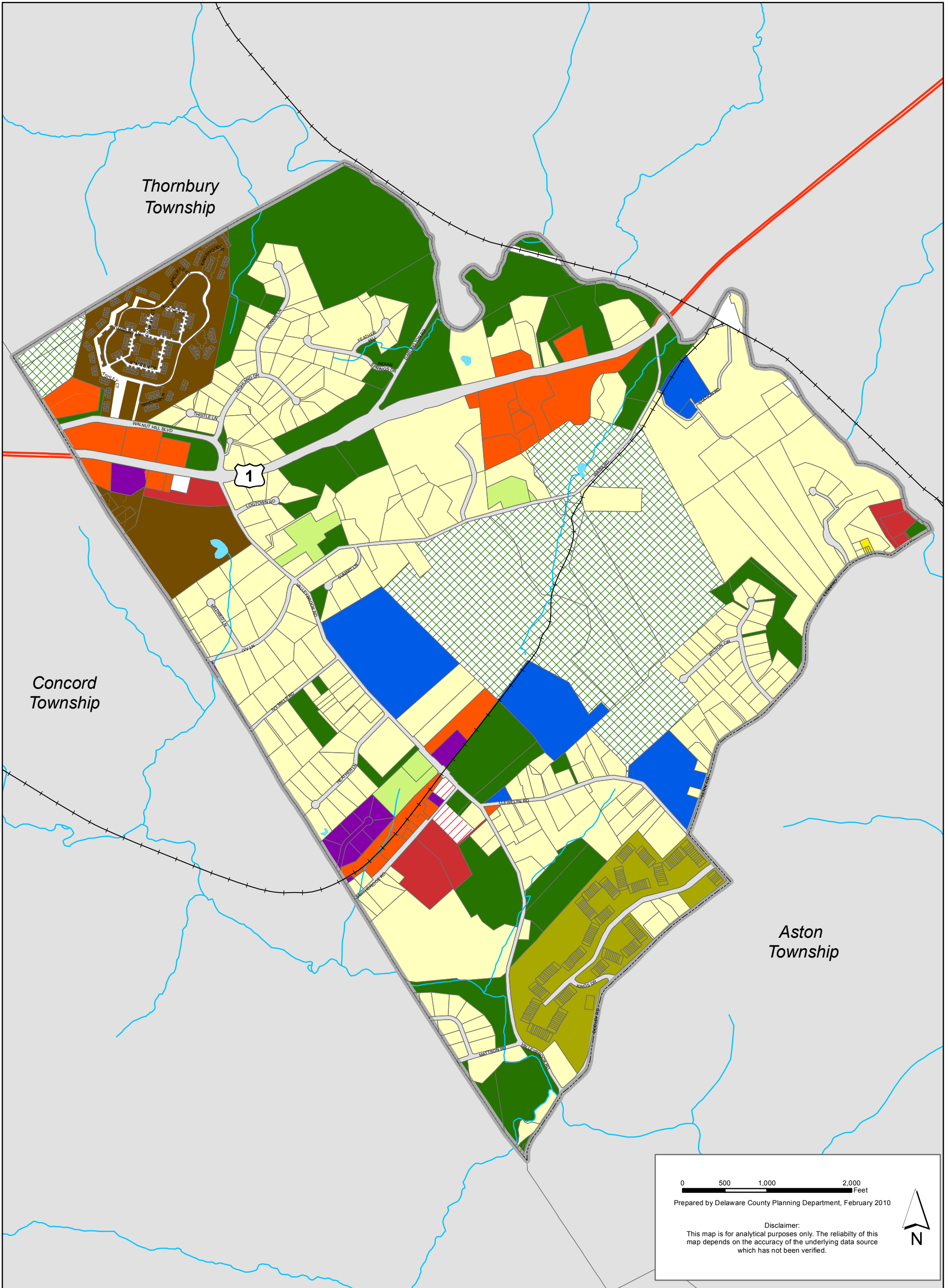


Map 9 - 1: Chester Heights Borough Municipal Comprehensive Plan - Existing Land Use



0 500 1,000 2,000 Feet

Prepared by Delaware County Planning Department, February 2010

Disclaimer:
This map is for analytical purposes only. The reliability of this map depends on the accuracy of the underlying data source which has not been verified.

—+— Abandoned Rail Lines	Land Use Classification	Apartment	Institutional	Roads
Streams and Lakes	Single-family detached	Mixed Use	Agricultural	Utility/railroad
Parcels	Single-family semi-detached	Commercial/Office	Open Space	Vacant
Municipal Boundaries	Single-family attached	Heavy Commercial/Light Industrial	Recreation	